

Model 1120 Thermolectric Generators



Standard Features

- Automatic Spark Ignition (SI)
- Automatic Fuel Shut-off (SO)
- Fuel Filter
- Low Voltage Alarm Contacts (VSR)
- Volt & Amp Meters
- Flame Arrestor
- Corrosive Environment Fuel System
- CSA Certification
(Class 1, Div. 2 Group D, Temp T3)

Optional Features

- FM certification (Class 1, Div. 1, Temp T3)
- Corrosion resistant upgrade (Div. 2 version)
 - 316 SS regulator & fuel valve
 - Corrosion resistant alloy coated combustion chamber
 - up to 1% H₂S in fuel
- Cathodic Protection Interface Panel
- Pole Mount or Bench Stand
- Intake Air Filter

Note: Specifications shown are for standard configurations. Global Thermolectric's Integrated Systems Engineering Department is available to design custom voltages, fuel supply systems and non-standard operating temperatures.



Hazardous Area Generator

Global Thermolectric's Model 1120 Thermolectric Generator is Class 1, Div. 2 or Class 1, Div. 1 Hazardous area rated. With no moving parts it is a reliable, low maintenance source of DC electrical power for any application where regular utilities are unavailable or unreliable.

Power Specifications

Power Rating at 20°C

110 Watts at 6.7 Volts

100 Watts at 12 Volts

100 Watts at 24 Volts

100 Watts at 48 Volts

Electrical

Adjustment:	6.7 V	up to 11 Volts
	12 V	12 -18 Volts
	24 V	24 - 30 Volts
	48 V	48 - 60 Volts

Reverse current protection included.

Output: Terminal block which accepts up to 00 AWG wire. Opening for two 3/4" NPT ports in the base of the electronics enclosure.

Fuel

Natural Gas:	8.8 m ³ /day (311 Sft ³ /day) 1000 BTU/Sft ³ (37.7 MJ/SM ³) gas max 115 mg/Sm ³ (~170 ppm) H ₂ S max 120 mg/Sm ³ H ₂ O max 1% free O ₂
Propane:	11.4 l/day (3.0 US gal/day)
Max. Supply Pressure:	172 kPa (25 psi)
Min. Supply Pressure:	69 kPa (10 psi)
Fuel Connection:	1/4" MNPT

Environmental

Ambient Operation Temperature: Max. +45°C (115°F) Min. -40°C (-40°F).

Operating Conditions: Unsheltered operation certified for use in hazardous areas.

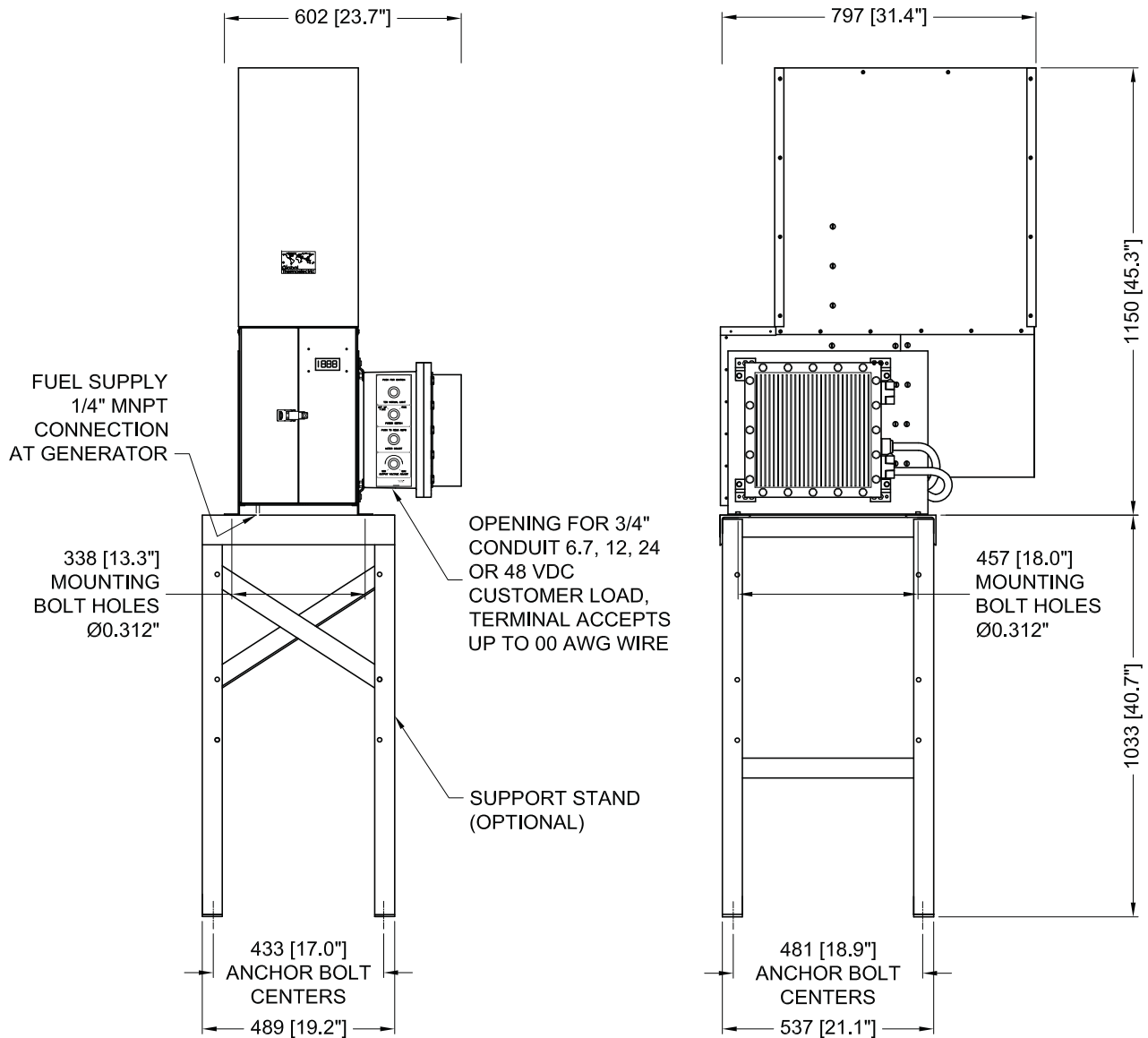
Please contact Global for operating conditions below -40°C or above +45°C.

Materials of Construction

Cabinet:	316 SS
Cooling Type:	Natural Convection
Fuel System:	Aluminum & Stainless Steel



Typical Installation



42359 rev0

NOTES:

1. GENERATOR WEIGHT: 130 kg [285 lb]
2. DIMENSIONS IN mm [INCHES].



Power where you need it.®

Corporate Office
 9, 3700 - 78 Avenue SE
 Calgary, Alberta T2C 2L8 CANADA
 Phone: (403) 236-5556
 Fax: (403) 236-5575
 www.globalte.com

US Sales
 P.O. Box 38624
 Houston, TX 77238
 Phone: (281) 445-1515
 Fax: (281) 445-6060
 Toll Free: 1 800 848-4113

Model 1120 Thermoelectric Generator