

Model 5100 Thermoelectric Generators



Global Thermoelectric's Model 5100 Thermoelectric Generator contains no moving parts. It is a reliable, low maintenance source of DC electrical power for any application where regular utilities are unavailable or unreliable.

Power Specifications

Power Rating at 20°C
100 Watts at 6.7 Volts
100 Watts at 14 Volts
100 Watts at 27 Volts

Electrical

| | | |
|-------------|------|---------------|
| Adjustment: | 6.7V | 4 - 7.5 Volts |
| | 12 V | 12 - 18 Volts |
| | 24 V | 24 - 30 Volts |

Output: Terminal block which accepts up to 8 AWG wire. Opening for 3/4" conduit in the base of the cabinet.

Fuel

Natural Gas: 9.9 m³/day (350 ft³/day) of
1000 BTU/ft³ (37.7 MJ/m³) gas
max 115 mg/m³ (~170 ppm) H₂S
max 120 mg/m³ H₂O
max 1% free O₂

Propane: 15.4 l/day (4.1 US gal/day)

Max. Supply Pressure: 344 kPa (50 psi)

Min. Supply Pressure: 103 kPa (15 psi)

Fuel Connection: 1/4" MNPT

Environmental

Ambient Operation Temperature: Max. 55°C (130°F) Min. -40°C (-40°F).

Operating Conditions: Unsheltered operation, shaded at > 45°C.

Please contact Global for operating conditions below -40°C or above +55°C.

Materials of Construction

Cabinet: 304 SS

Cooling Type: Natural Convection

Fuel System: Brass, Aluminum & SS

Certified To CSA Std T.I.L. R-10

Rev 07-13.1

Standard Features

- Automatic Spark Ignition (SI)
- Automatic Fuel Shut-off (SO)
- Fuel Filter
- Low Voltage Alarm Contacts (VSR)
- Reverse Current Protection
- API 12N Flame Arrestor

Optional Features

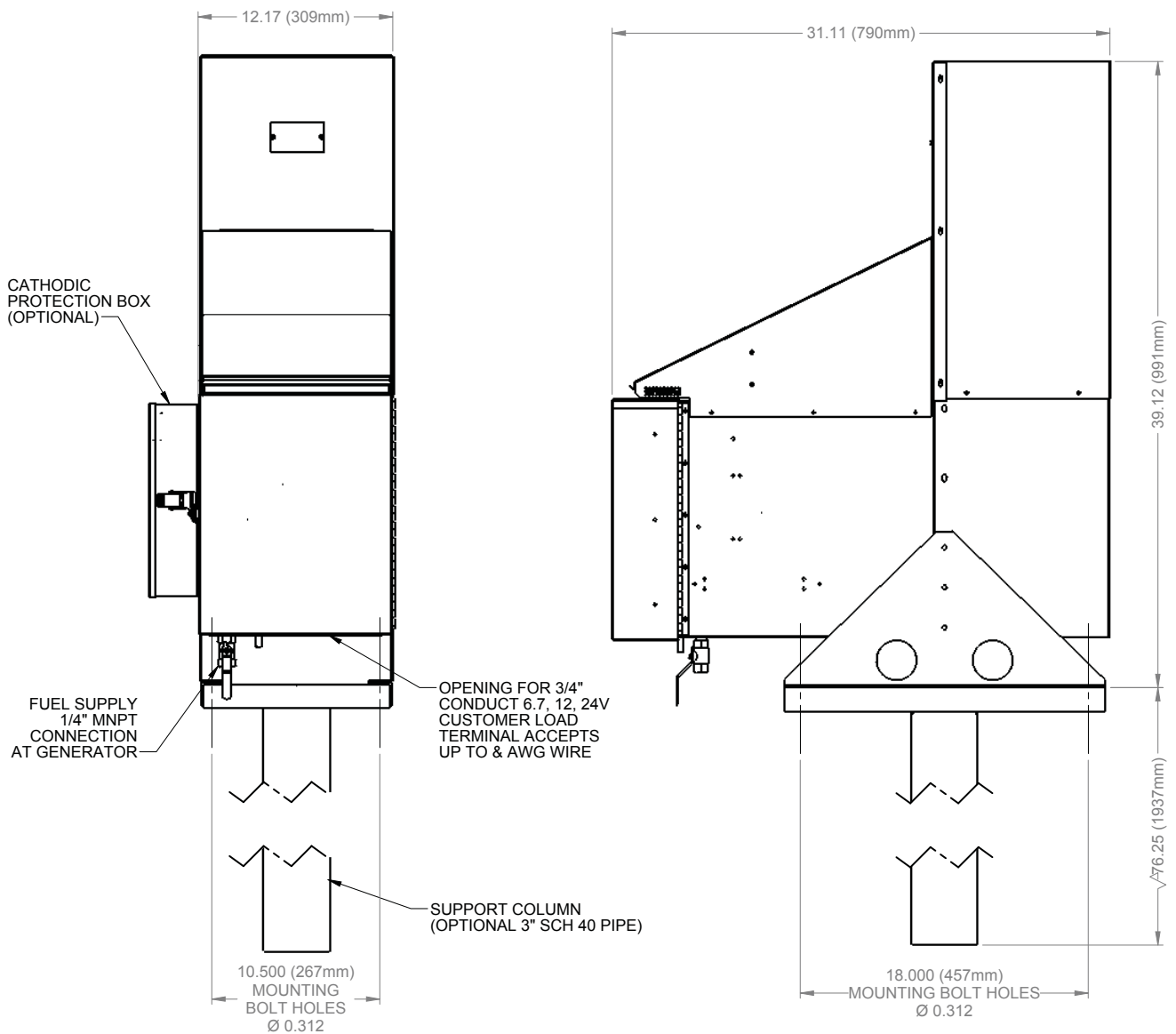
- Remote Start
- Corrosive Environment Fuel System
- Cathodic Protection Interface
- Pole Mount or Bench Stand

Note: Specifications shown are for standard configurations. Global Thermoelectric's Integrated Systems Engineering Department is available to design custom voltages, fuel supply systems and non-standard operating temperatures



Typical Installation

Rev 07-13.1



Power where you need it.®

Corporate Office
 9, 3700 - 78 Avenue SE
 Calgary, Alberta T2C 2L8 CANADA
 Phone: (403) 236-5556
 Fax: (403) 236-5575
 www.globalte.com

US Sales
 P.O. Box 38624
 Houston, TX 77238
 Phone: (281) 445-1515
 Fax: (281) 445-6060
 Toll Free: 1 800 848-4113

Model 5100 Thermoelectric Generator