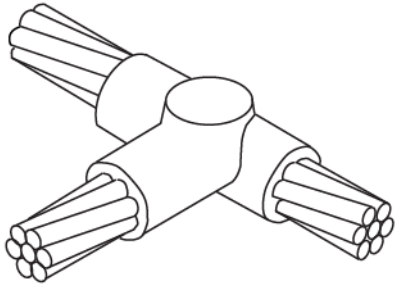


# Connections of Cable to Cable

## Type CATA

Type CATA connections are available for any combination of run and tap conductor sizes. For small size taps, the Type CAPC is recommended. Contact your local distributor or ERICO for additional information.



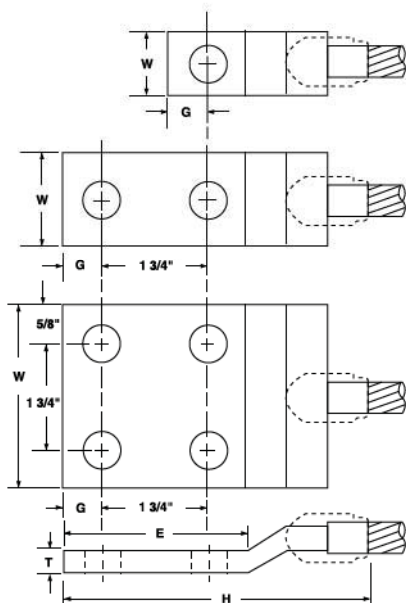
### Concentric Strand Copper Cable

| Run | Cable Size Tap | Welder Mold Part No. | Weld Price | Metal |
|-----|----------------|----------------------|------------|-------|
| 2   | 2              | CATAN-1VIV           | CAN        | CA45  |
|     | 4              | CATAN-1V1L           | CAN        | CA45  |
| 1   | 1              | CATAN-1Y1Y           | CAN        | CA45  |
|     | 2              | CATAN-1Y1V           | CAN        | CA45  |
|     | 4              | CATAN-1Y1L           | CAN        | CA45  |
| 1/0 | 1              | CATAN-2C1Y           | CAN        | CA45  |
|     | 2              | CATAN-2C1V           | CAN        | CA45  |
|     | 4              | CATAN-2C1L           | CAN        | CA45  |
| 2/0 | 1              | CATAN-2G1Y           | CAN        | CA45  |
|     | 2              | CATAN-2G1V           | CAN        | CA45  |
|     | 4              | CATAN-2G1L           | CAN        | CA45  |

# Connections of Cable to Lug

## Type CALA

Type CALA  
Cable terminals (Lugs).



| Conductor Size                                 | Welder Part No. <sup>†</sup> | Weld Price | Weld Metal | Lug Part No. <sup>3</sup> | Lug Size | Stud Size |
|--|------------------------------|------------|------------|---------------------------|----------|-----------|
| #8 Solid or Stranded, or #6 Solid <sup>1</sup> | CALAT-1G                     | CAT        | CA25       | CAB-101-AA                | 1/16X1/2 | 1/4       |
| 6 Stranded <sup>2</sup>                        | CALAT-1H                     | CAT        | CA25       |                           |          |           |
| 4 Solid  | CALAT-1K                     | CAT        | CA25       |                           |          |           |
| 4 Stranded                                     | CALAT-1L                     | CAT        | CA25       |                           |          |           |
| 2 Solid  | CALAT-1T                     | CAT        | CA32       | CAB-101-CE                | 1/8X1    | 3/8       |
| 2 Stranded                                     | CALAT-1V                     | CAT        | CA32       |                           |          |           |
| 1 Stranded                                     | CALAT-1Y                     | CAT        | CA32       |                           |          |           |
| 1/0 Stranded                                   | CALAP-2C                     | CAP        | CA45       | CAB-101-CE                | 1/8X1    | 3/8       |
| 2/0 Stranded                                   | CALAP-2G                     | CAP        | CA45       |                           |          |           |

<sup>1</sup> Requires sleeve CAB-133-1L (1 per connection).

<sup>2</sup> Requires sleeve CAB-112 (1 per connection).

<sup>3</sup> Two hold lugs also available.

<sup>†</sup> Welder Part No. includes mold frame. If mold only (less frame) is required, order - Welder Part No. - "M".