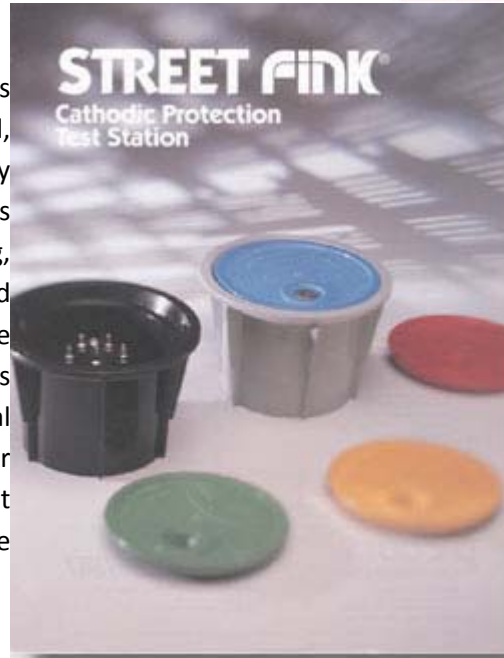


**Street Fink®**

The Street Fink® cathodic protection test station is a non-conductive, high capacity, flush mounted, below ground terminal that is used to conveniently monitor electrical currents and potentials associated with all types of underground piping, cables, and other metallic structures. Designed especially for use in troublesome locations where water, street traffic and other adverse conditions exist, the Street Fink® will maintain its structural integrity during hard usage and is suitable for installation in asphalt. Made by Cott Manufacturing Company, it is readily available from Cott distributors worldwide.



**Features:**

**CP Test Station**

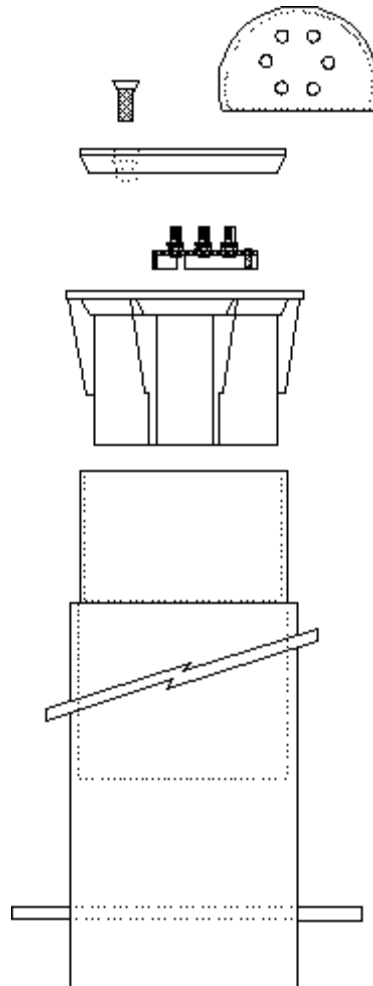
Lid, Terminal Board and Housing made from Makroblend® polycarbonate. One of the toughest plastics in the world. Not damaged by chemicals common to street usage.

**Support Post**

CottPipe® PE (standard) polyethylene blend has over 20 years of proven durability. CottPipe® PC (optional) polycarbonate is available for the toughest applications. Standard length 1 foot - available to 40 feet with Cott's Telescoping Extender.

**Colors**

Red, Orange, Yellow, Green, Blue, White, and Black are standard on



Street Fink® and CottPipe®. Any color is available as an option.

**Hardware**

Standard nickel plated brass or optional stainless steel for guaranteed long service life. Up to 9 terminals accessible from both sides of the board.

**Accessories**

All Street Fink® terminal boards can accommodate CottShunts® Slide Resistors, Rheostats, CottMeter® (Volt or Amp), Burndy connectors, Cott bonding/shorting straps, Banana Jacks, locking devices and lightning arrestors.

**Dimensions**

7-3/4" Diameter x 5" height fits 6" schedule 40 pipe.