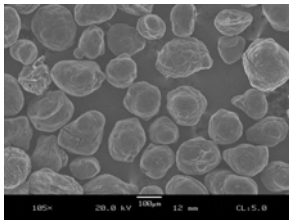


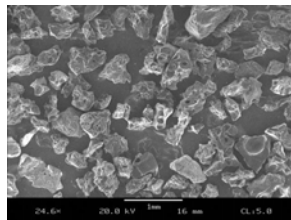
Carbon Anode Backfill

The purpose of coke backfill is to produce an electrical pathway for current flow. Asbury Carbons backfill products decrease anode to earth resistance, decrease gas blockage and drying tendencies, increase anode life, prevent cave-ins while maintaining bore integrity.

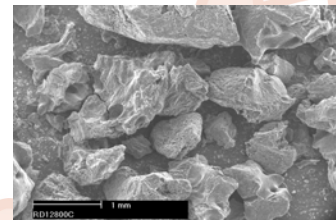
Grade	Size	Carbon	Bulk Density lbs/cu ft	Resistivity Ohm cm
Calcined Fluid Coke				
4518	1/4 x 30 Mesh	99.9%	60	.10
250	4 x 200 Mesh	99.8%	60	.10
251	20 x 200 Mesh	99.8%	65	.10
251P	20 x 200 Mesh	99.8%	65	.10
Metallurgical Coke Breeze				
4649	1/4 x 0	88.5%	40	.15
Calcined Petroleum (Delayed) Coke				
218-L	3/8 x 10 Mesh	99.0%	45	.10
218-R	8 x 60 Mesh	99.0%	45	.10
218-F	3/8 x 0 Mesh	99.0%	45	.10
218-XF	20 x 200 Mesh	99.0%	60	.10
218-C	1/4 x 20 Mesh	99.0%	45	.10



Calcined Fluid Coke



Metallurgical Coke



Calcined Delayed Coke

The Manufacturer and Supplier of Choice

- Largest selection of cokes in the industry.
- Ship from 6 plant / Manufacturing locations.
- Worldwide network of distributors and warehouse locations.
- Overseas shipments made from East, West and Gulf port locations.
- Packaging includes bags, bulk bags and bulk truckload shipments.
- Custom Packaging in your package available.
- Quality Certificate of Analysis with each shipment.

For LOW RESISTANCE COKES rely on Asbury



ASBURY GRAPHITE MILLS, INC.

405 Old Main Street • PO Box 144 • Asbury, New Jersey 08802

Phone: 908.537.2155 • Fax: 908.537.2908

www.asbury.com