

Model IP - Seawater Reference Electrode

Typical Applications

- Portable use - intermittent potential measurements in seawater
- Permanent use - piers, pilings, traveling screens, and other marine structures

Featuring

- Sized to join with standard ½ inch PVC conduit or pipe fittings
- Rugged white PVC housing
- Ag/AgCl or Zn element for open seawater (marine) applications



Housing Specifications

0.840 inch (21.3 cm) dia.
3 ¼ inch (8.3 cm) long white PVC
Shipping weight without wire – ½ lb. (¼ kg)

Element Types

AGD - dry-type Ag/AgCl
ZIN - 99.99% zinc

Terminations

ST - 1/4-20 NC threaded stud
SW - 25 ft. (7.5 m) #18 AWG PVC insulated test lead
LWnnn - additional lead wire in 25 ft. increments

Model Designation

Specify as EDI Model IP-xxx-yy
xxx = Element type
yy = Termination type

The **Model IP** is a compact, economical, dry-type reference electrode for marine applications. It is 0.840 inch (21.3 cm) diameter which enables the user to cement on any ½ inch socket-end PVC pipe or electrical conduit fitting (e.g. male or female conduit thread or couplings) for permanent installation. Examples of this are shown on EDI Drawing IPASY - 5 where ½ inch PVC couplings serve as transition pieces for running the lead wire through conduit or attaching the electrode to a wall. For intermittent use, the **Model IP** has a blind 1/4-20 NC tapped hole for attaching up to a 5 lb (2 kg) weight. Should more weight than that be necessary, the electrode and the weight should be attached to a separate drop line as shown on EDI Drawing IPASY - 4.

This product is intended for use in clean full strength seawater. Our **Model IR-AGG** Immersion Reference will give better service in polluted seawater or brackish seawater where the salinity varies with the tidal cycle.

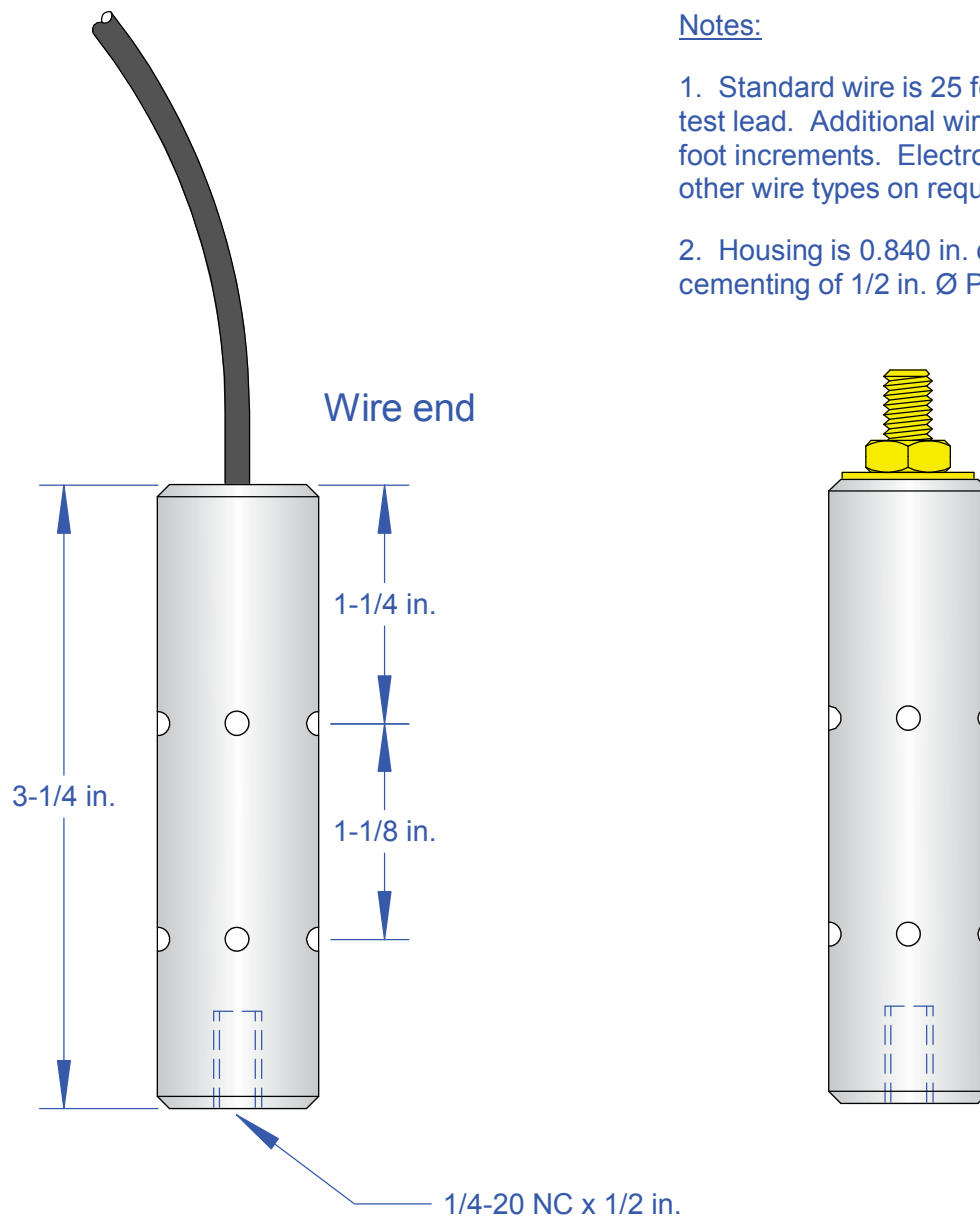
electrochemical devices, inc.

Sales office: Tel: 617-484-9085 Fax: 617-484-3923

Main office: P.O. Box 31; Albion, RI 02802-0031
Tel: 401-333-6112 Fax: 401-333-9724

*I Series
Immersion
Reference
Electrodes*





Notes:

1. Standard wire is 25 feet AWG #18 PVC insulated test lead. Additional wire lengths are available in 25 foot increments. Electrode can also be mounted on other wire types on request.
2. Housing is 0.840 in. diameter. This size allows cementing of 1/2 in. Ø PVC socket fittings.

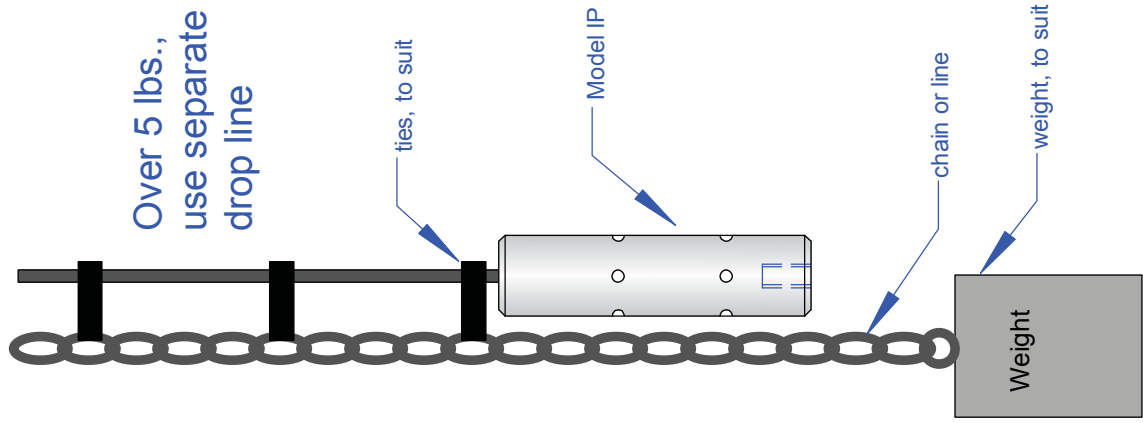
Specify as EDI Model IP-xxx-yy
 where xxx = element code
 yy = termination code.

Element codes: AGD = Ag/AgCl (dry)
 ZIN = 99.99% zinc

Termination codes: ST = stud end
 SWnnn = standard wire (#18 AWG test lead)
 CNnnn = custom wire as specified
 nnn = wire length in feet

Seawater Reference Electrode

SCALE	FULL
DRAWN BY	FJA
DATE	09 MAY 2011
DRAWING NUMBER	IPASY - 3



Over 5 lbs.,
use separate
drop line

ties, to suit

Model IP

chain or line

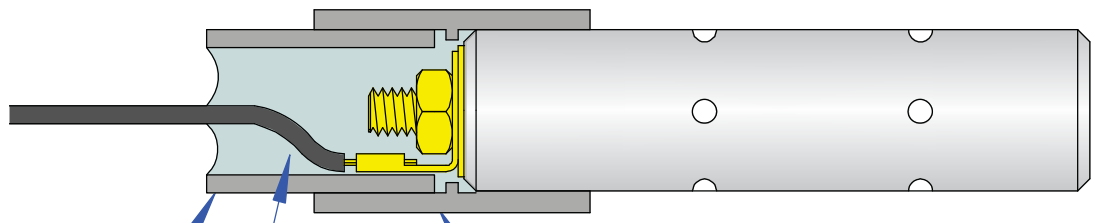
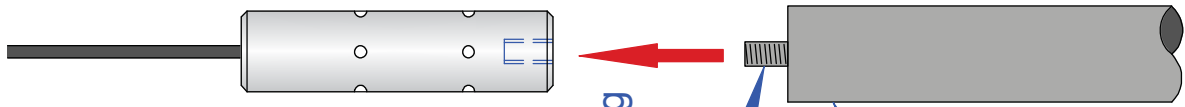
Weight

weight, to suit

Under 5 lbs.,
attach weight
directly to housing

1/4-20 NC thread,
7/16 in.

steel or brass rod,
1 in. dia. x 12 in.
long (approx 3 lbs.)



1/2 in. PVC pipe or
conduit, length to suit

potting compound

1/2 in. PVC S x S
pipe or conduit fitting

Permanent wire attachment to stud

Make electrical connection using a
ring lug. Use PVC cement to join
electrode, fitting and conduit
section. Fill with potting compound.

Refer to drawing IPASY-5 for permanent installation techniques.



electrochemical devices, inc.
PO Box 31, Albion, RI 02802 401-333-6112

Suspending seawater reference from a wire

© EDI 2011

www.edi-cp.com

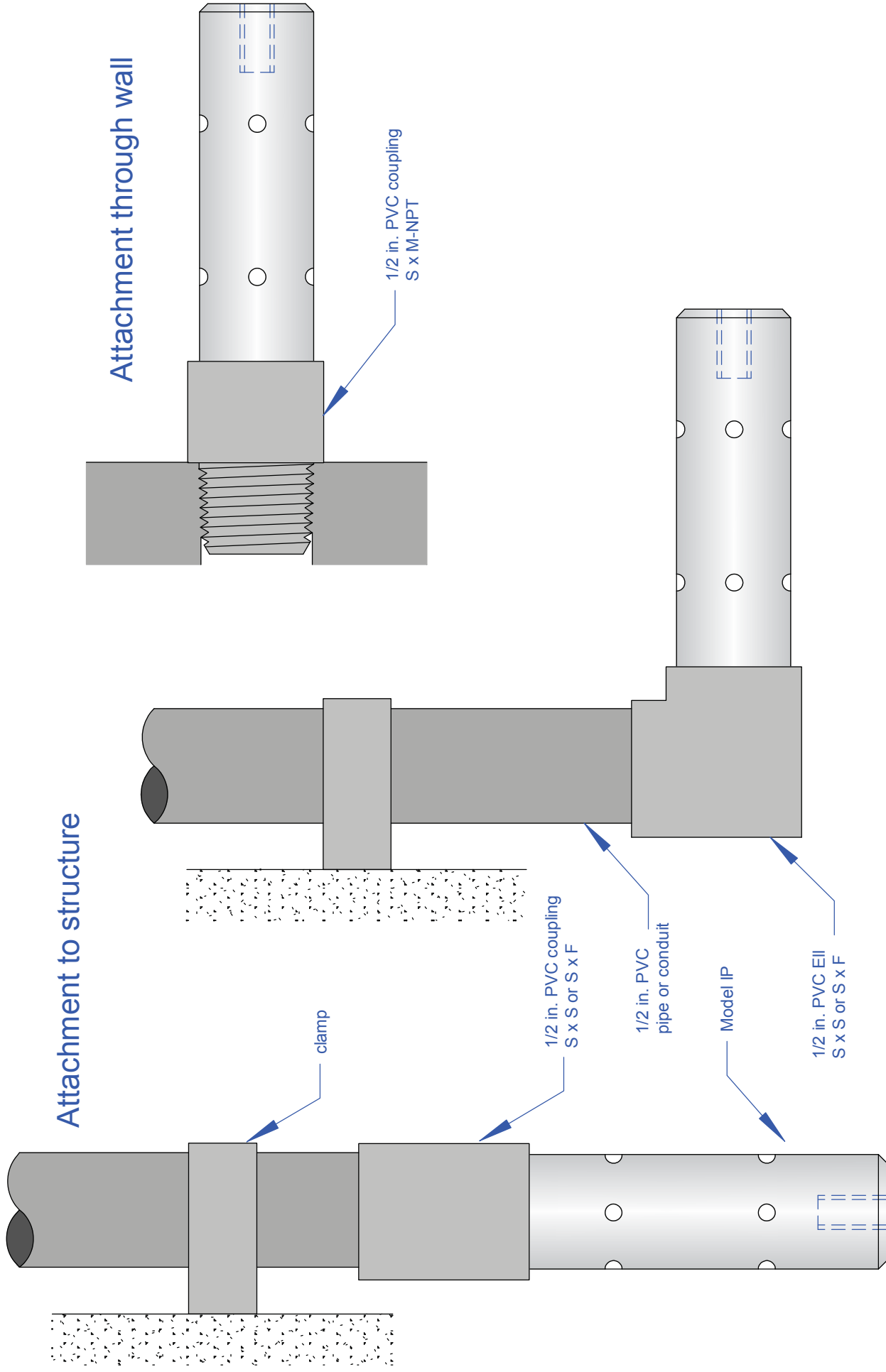
info@edi-cp.com

SCALE NONE

DRAWN BY FJA

DATE 09 MAY 2011

DRAWING NUMBER IPASY - 4



Refer to drawing IPASY-4 for suspending reference from a wire.

Permanent installation of seawater reference

electrochemical devices, inc.
 PO Box 31, Albion, RI 02802 401-333-6112

© EDI 2011	www.edi-cp.com	info@edi-cp.com	SCALE NONE	DRAWN BY FJA	DATE 09 MAY 2011	DRAWING NUMBER IPASY - 5
------------	----------------	-----------------	------------	--------------	------------------	--------------------------