



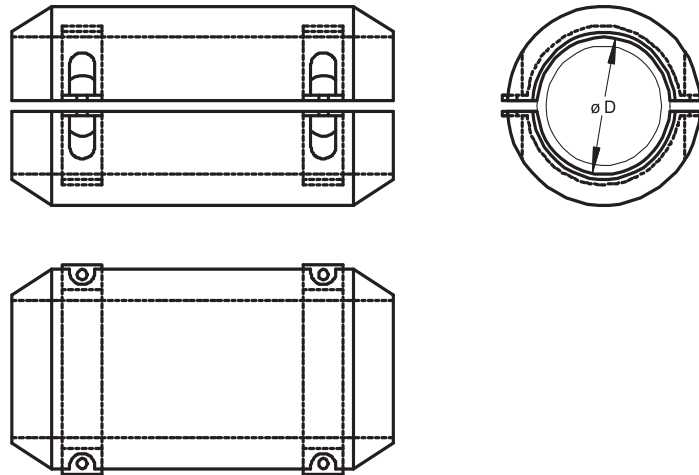
# Zinc Bracelet Anodes



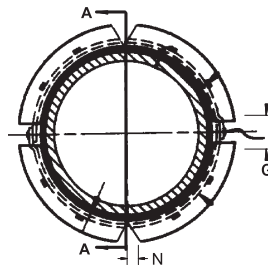
Galvotec has produced all sizes of zinc bracelets ranging from 1 1/2" O.D. to 48" O.D. including cast-on bracelet sizes with great success. Galvotec's accomplishment regarding on time deliveries and quality workmanship is due to our competent staff with many years of experience in manufacturing anodes of all types.

Galvotec's laboratory is fully equipped with state-of-the-art equipment. All products are tested and inspected prior to shipping. Chemical analyses are run on each heat prior to production.

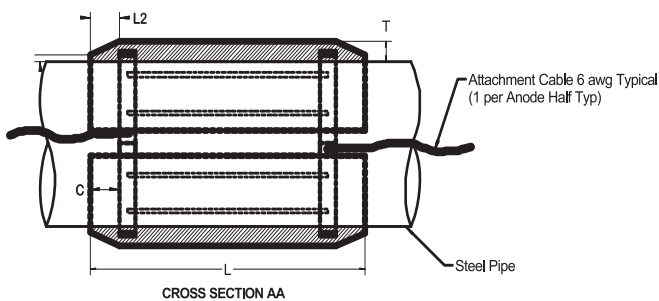
## Bolt-on



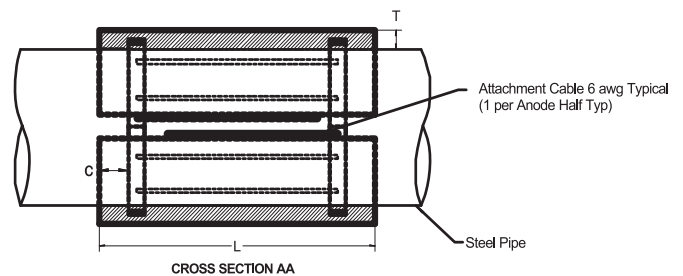
## Weld-on



## Tapered



## Square End

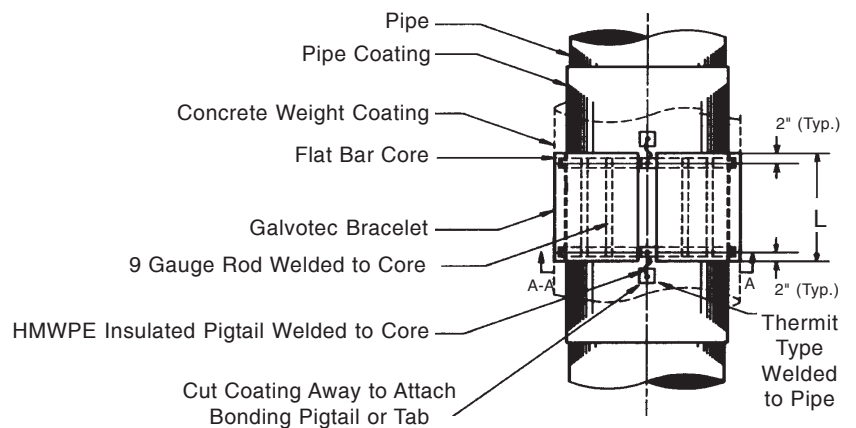
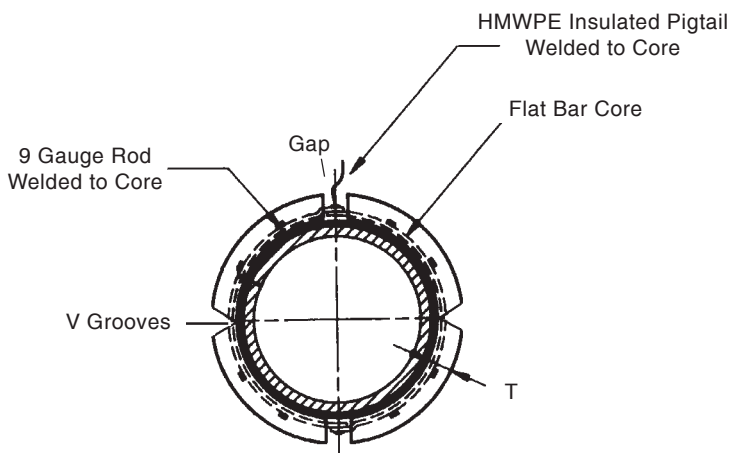
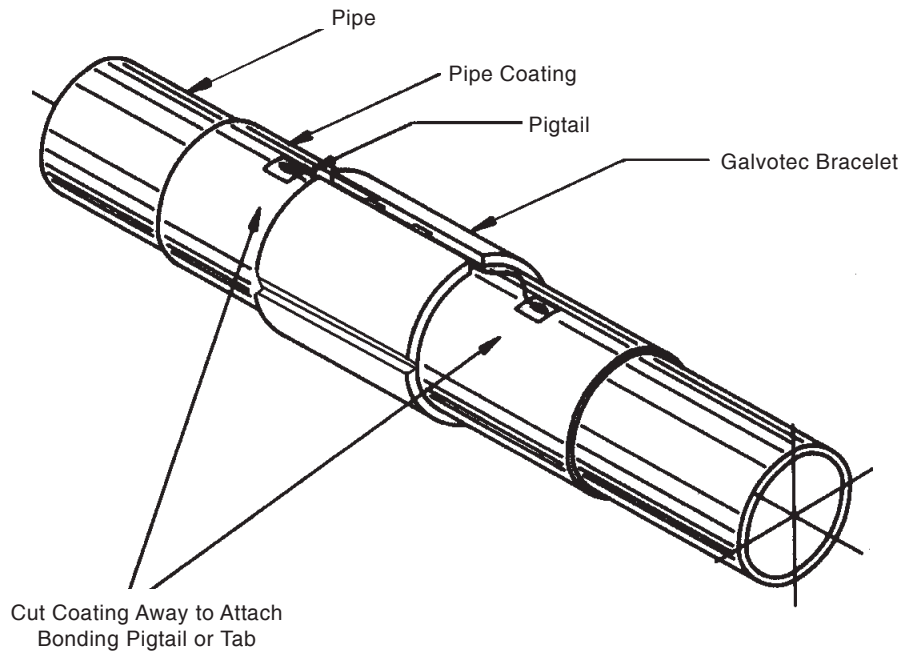




# Zinc Bracelet Anodes



Semi-Cylindrical for Concrete Coated Pipe





# Zinc Bracelet Anodes



## Tapered Bracelets

Bracelet I.D.		TYPE *	THICKNESS		LENGTH		GAP		NET WT.		GROSS WT.	
in	mm		in	mm	in	mm	in	mm	lbs	kg	lbs	kg
2 3/8	60	T	1 1/4	32	12	305	1	25	29	13.2	31	14.1
3 1/2	89	T	1 1/4	32	12	305	1	25	39	17.7	41	18.6
4 1/2	114	T	1 1/2	38	12	305	1 1/4	32	62	28.1	64	29.0
4 1/2	114	T	1 1/2	38	19 1/4	489	1 1/4	32	119	54.0	122	55.3
5 9/16	141	T	1 1/2	38	15 5/8	397	1 1/4	32	95	43.1	98	44.5
6 5/8	168	T	1 1/2	38	11 1/4	286	1 1/2	38	83	37.7	87	39.5
6 5/8	168	TB2	1 1/2	38	13 1/2	343	3/4	19	83	37.7	87	39.5
6 5/8	168	T	1 1/2	38	13 5/8	346	1 1/2	38	83	37.7	87	39.5
6 5/8	168	T	1 1/2	38	18	457	1 1/4	32	155	70.3	159	72.1
6 5/8	168	T	1 3/4	44	21 1/4	540	1 1/2	38	190	86.2	194	88.0
6 5/8	168	ST	1 3/4	44	21 3/4	553	1 1/2	38	204	92.5	208	94.4
7 3/8	187	TB2	2 1/4	57	9 1/2	241	1	25	114	51.7	119	54.0
8 5/8	219	T	1 1/2	38	11 1/4	286	1 1/2	38	101	45.8	106	48.1
8 5/8	219	T	1 1/2	38	14 1/3	364	1 1/2	38	129	58.5	134	60.8
8 5/8	219	T	1 1/2	38	19.8	503	1 1/2	38	212	96.2	217	98.4
8 5/8	219	TB1	2 1/4	57	26 5/8	676	-	-	212	96.2	217	98.4
8 5/8	219	T	2 1/2	64	16	406	1 1/2	38	250	113.4	254	115.2
9 3/8	238	ST w/sockets	1 1/2	38	13 1/2	343	3	76	183	83.0	187	84.8
9 1/2	241	TB2	2 1/2	64	10 1/2	267	2	51	168	76.2	170	77.1
10 3/4	273	T	1 1/2	38	12.7	323	2	51	129	58.5	136	61.7
10 3/4	273	T	1 1/2	38	17 3/4	451	2	51	196	88.9	201	91.2
10 3/4	273	T	1 3/8	35	18 3/4	476	1 1/2	38	209	94.8	214	97.1
10 3/4	273	T	1 3/4	44	22	559	2	51	304	137.8	309	140.2
10 3/4	273	ST	1 3/4	44	22 1/4	565	2	51	320	145.2	326	147.9
10 3/4	273	TB1	3 1/4	83	24 1/2	622	-	-	338	153.3	352	159.7
10 3/4	273	ST	1 3/4	44	40	1016	2 1/2	64	586	265.8	596	270.3
12 3/4	324	T	1 1/2	38	14 3/4	375	2	51	191	86.6	201	91.2
12 3/4	324	T	1 1/2	38	16 3/4	425	1 1/2	38	269	122.0	275	124.7
12 3/4	324	ST	1 1/2	38	21.2	539	2 1/4	57	307	139.3	319	144.0
12 3/4	324	T w/sockets	1 1/2	38	23	584	4	102	323	146.5	329	149.2
12 3/4	324	T	2	51	19 5/8	498	2	51	385	174.6	398	180.5
12 3/4	324	ST1	1 3/8	35	31 1/2	800	2	51	426	193.2	438	198.7
13 9/16	345	T w/sockets	1 1/2	38	14	356	4	102	178	80.7	184	83.5
14	356	ST	1 1/2	38	21.1	536	2 1/4	57	338	153.3	351	159.2
14	356	ST	1 3/4	44	21 3/4	553	2	51	397	180.1	411	186.4
16	406	ST	1 3/4	44	20	508	2 1/4	57	436	197.8	451	204.6
16	406	ST1	1 1/2	38	32	813	2	51	542	245.9	557	252.7
16	406	ST	2	51	23	584	2 1/2	64	544	246.8	559	253.7
32	813	T	2	51	15 1/2	394	3	16	750	1654	785	1731
36	914	T	2 3/4	70	16 7/8	429	3	76	1096	2416	1131	2493
40	1016	T	2	51	15 3/8	390	3	76	604	1332	631	1391

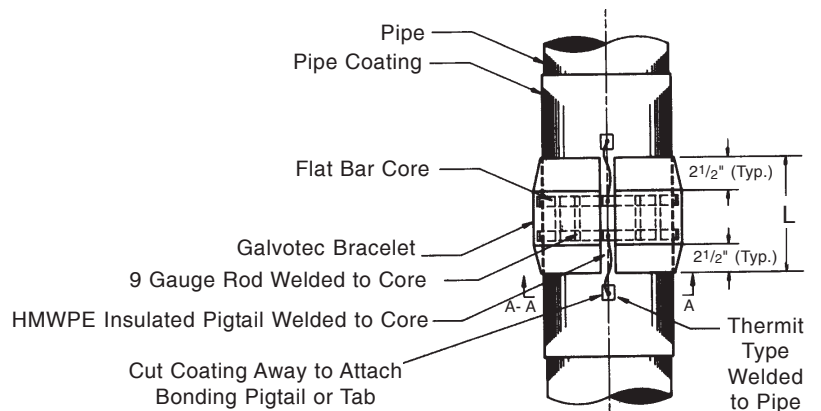
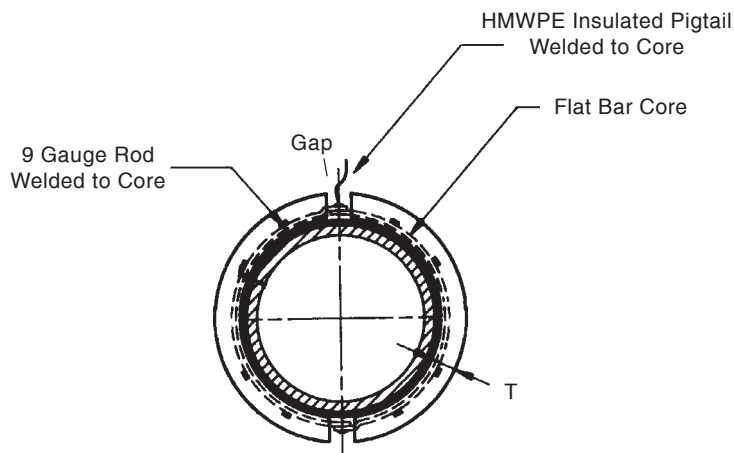
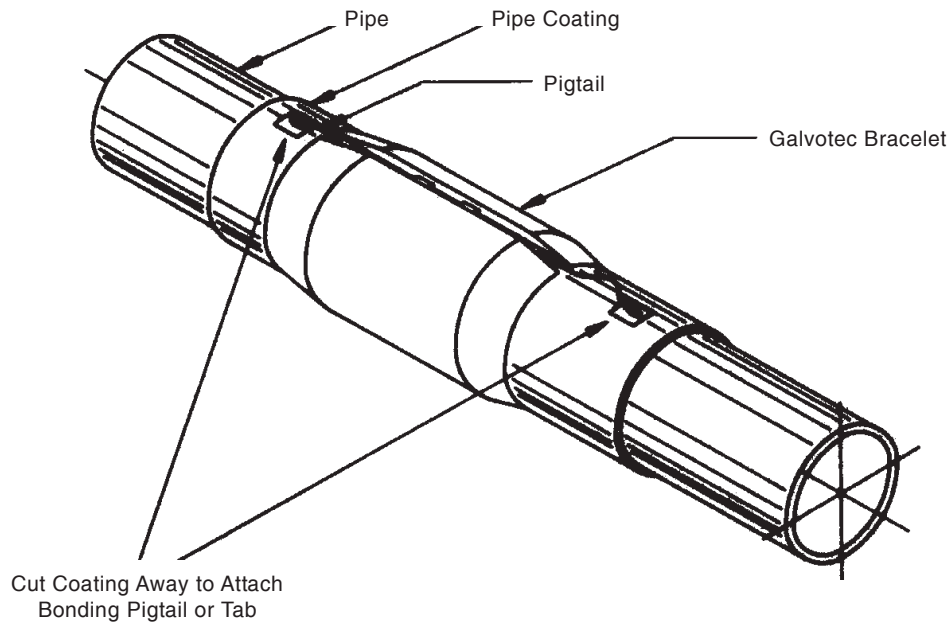
- \* T=Tapered
- TB1=Tapered-Bolt-On (1 half only)
- TB2=Tapered-Bolt-On
- ST=Semi-Tapered
- ST1=Semi-Tapered (One End Only)



# Zinc Bracelet Anodes



## Semi-Cylindrical Tapered Anodes





# Zinc Bracelet Anodes



## Concrete Coated Pipe Bracelets

Bracelet I.D.		TYPE *	THICKNESS		LENGTH		GAP		NET WT.		GROSS WT.	
in	mm		in	mm	in	mm	in	mm	lbs	kg	lbs	kg
6 5/8	168	CC	1 1/2	38	14 1/2	368	3	76	107	48.5	111	50.3
6 7/8	175	IT	1 1/2	38	19 1/2	495	2	51	161	73.0	165	74.8
8 5/8	219	CC	1 1/2	38	8 1/2	216	2	51	78	35.4	81	36.7
8 5/8	219	CC	1 3/4	44	16 1/4	413	1 1/2	38	229	103.9	234	106.1
8 7/8	225	IT	1 1/2	38	16 1/2	419	2	51	164	74.4	168	76.20
10 3/4	273	CC	1 3/4	44	18 1/4	464	2 1/2	64	270	122.5	279	126.6
10 3/4	273	CC	1 3/4	44	22	559	2	51	304	137.9	316	143.3
10 3/4	273	CC	2	51	17 3/8	441	2	51	312	141.5	321	145.6
10 3/4	273	CC	2	51	21 3/4	553	2 1/2	64	354	160.6	364	165.1
11	279	IT	1 1/2	38	19 1/2	495	2	51	253	114.8	259	117.5
12	305	CC	1 1/2	38	16 3/8	416	2	51	234	106.1	244	110.7
12	305	CC	2	51	11 3/4	299	2	51	234	106.1	244	110.7
12 3/4	324	CC	1 1/8	29	16	406	2	51	177	80.3	190	106.1
12 3/4	324	CC	1 1/4	32	16	406	2	51	192	87.1	198	89.8
12 3/4	324	CC	1 1/8	29	21 1/2	546	1 1/2	38	250	113.4	264	119.8
12 3/4	324	CC	1 1/2	38	18.9	480	2	51	291	132.0	304	137.9
12 3/4	324	CC	1 3/4	44	18 1/2	470	3	76	338	153.3	351	159.2
12 3/4	324	CC	1 1/2	38	26 5/8	676	3	76	387	175.5	400	181.4
13	330	IT	1 1/2	38	16 1/2	419	2	51	237	107.5	242	109.8
14	356	CC	1 1/4	32	16 3/4	426	2	51	239	108.4	247	112.0
14	356	CC	2	51	21	533	3	76	406	184.2	473	214.6
16	406	CC	1 1/4	32	12	305	2	51	174	78.9	189	85.7
16	406	CC	1	25	21	533	2	51	270	122.5	286	129.7
16	406	CC	1	25	24 3/4	629	1 1/2	38	333	151.0	349	158.3
16	406	CC	1 1/2	38	17 1/2	445	2	51	333	151.0	349	158.3
16	406	CC	1 1/4	32	25	635	1 1/2	38	403	182.8	419	190.1
16	406	CC	1 3/4	44	18 1/2	470	3	76	411	186.4	422	191.4
16	406	CC	1 1/2	38	21 3/4	553	2	51	437	196.2	453	205.5
16	406	CC	2 1/2	64	13.4	340	3	76	442	200.5	458	207.7
18	456	CC	1 5/8	41	17 3/16	437	4 3/8	111	359	162.8	376	170.6
18	457	CC	2 1/2	64	12 1/2	318	3	76	468	212.3	485	220.0
18	457	CC	1 3/4	44	19 1/2	495	2 1/2	64	489	221.8	506	229.5
18	457	CC	1 3/4	44	18.9	480	2	51	489	221.8	506	229.5
18	457	RT	2 3/4	70	24 7/8	632	4 3/8	111	562	254.9	579	229.5
18	457	CC	1 3/4	44	27 5/8	702	3	76	684	310.3	701	318.0
18	457	CC	2	51	21 1/4	540	2 1/2	64	619	280.8	637	288.9
20	508	CC	1 3/4	44	8 1/2	216	3 3/4	95	195	88.5	205	114.5
20	508	CC	1 3/4	44	9 1/2	241	2	51	260	117.9	279	126.6
20	508	CC	1 3/4	44	10 1/4	260	2	51	289	131.1	308	139.7
20	508	CC	1 1/2	38	16 1/2	419	3	76	372	168.7	390	176.9
20	508	CC	1 5/8	41	16	406	2 1/2	64	408	185.1	426	192.2
20	508	CC	2 1/2	64	10	254	2	51	416	188.7	434	196.9
20	508	CC	1 7/8	48	14 1/4	362	3	76	419	190.1	437	198.2
20	508	CC	2 1/4	57	12 3/4	324	2 1/2	64	447	202.8	465	210.9

Continued next page



# Zinc Bracelet Anodes



## Concrete Coated Pipe Bracelets (Continued)

Bracelet I.D.		TYPE *	THICKNESS		LENGTH		GAP		NET WT.		GROSS WT.	
in	mm		in	mm	in	mm	in	mm	lbs	kg	lbs	kg
20	508	CC	1.9	48	16 1/4	413	3	76	492	223.2	510	231.3
20	508	CC	1 5/8	41	21 1/4	540	2 1/2	6.4	494	224.1	513	232.7
20	508	CC	2 1/2	64	14	356	2 1/2	64	536	243.1	555	251.8
20	508	CC	1 3/4	44	19 3/4	502	2 1/2	64	544	246.8	563	255.4
20	508	CC	2	51	28 5/8	727	3	76	915	415.0	933	423.2
24	610	CC	1 1/4	32	13	330	2	51	302	137.0	325	147.4
24	610	CC	1 3/4	44	11 1/8	283	3	76	367	166.5	390	176.9
24	610	CC	1 3/4	44	14 1/8	359	3	76	460	208.7	483	219.1
24	610	CC	2 3/4	44	8 3/4	222	3	76	460	208.7	472	214.1
24	610	CC	3 3/4	95	6	152	3 1/2	89	460	208.7	472	214.1
24	610	CC	1 1/2	38	17	432	2 1/2	64	484	219.5	507	230.0
24	610	CC	2 1/8	54	11 1/4	286	2 1/2	64	489	221.8	512	232.2
24	610	CC	2	51	13.1	333	2 1/2	64	502	227.7	524	237.7
24	610	CC	2 1/2	64	10 7/8	276	3	76	520	235.9	543	246.3
24	610	CC	1 3/4	44	18 1/2	470	3	76	606	274.9	629	285.3
24	610	CC	2	51	16	406	3	76	606	274.9	629	285.3
24	610	CC	3 1/8	79	10	254	2 1/2	64	624	283.0	647	293.5
24	610	CC	3	76	10 5/8	270	3	76	624	283.0	647	293.5
24	610	CC	2	51	17	432	3	76	660	299.4	683	310.0
24	610	CC	3 1/8	79	10 3/4	273	2	51	689	312.5	712	323.0
24	610	CC	1 7/16	36.5	28 3/4	730	3	76	7750	3515.4	798	362.0
24	610	CC	2	51	19.6	498	3	76	746	338.4	769	348.8
24	610	CC	1 3/4	44	24 1/4	616	3	76	819	371.5	842	381.9
24	610	CC	2	51	35 3/4	908	3	76	1342	608.7	1365	619.2
24	610	CC	2 3/8	60	33 1/4	845	3	76	1547	701.7	1570	712.2
25	635	CCB	3 1/2	89	4 1/2	114	2	51	320	145.2	¥	¥
25	635	CCB	4 1/2	114	5	127	2	51	486	220.4	¥	¥
26	635	CC	1 9/16	41	21 11/16	551	5	127	655	297.1	679	308.0
30	762	CC	2	51	10	254	3	76	468	212.3	493	223.6
30	762	CC	2 3/4	70	8 1/2	216	3	76	564	255.8	580	263.1
30	762	CC	2 1/4	57	10 3/4	273	4	102	572	259.5	601	272.6
30	762	CC	2	51	12 1/2	318	3	76	606	274.9	631	286.2
30	762	CC	2 1/2	64	13.50	340	3	76	806	365.6	831	376.9
30	762	CC	2 1/4	57	15 1/2	394	3	76	840	381.0	865	392.4
36	914	CC	2	51	15 1/4	387	3	76	889	403.3	924	419.1
36	914	CC	2 1/4	57	15 1/8	384	3	76	996	451.8	1031	467.7
36	914	CC	3	76	12.6	320	4	102	1092	495.3	1127	571.2
36	914	CC	3	76	36 3/4	934	3	76	3286	1490.5	3337	1513.7
40	1016	CC	3 1/4	83	28 3/4	730	4	102	3037	1377.6	3093	1403.0
40	1016	CC	4 1/4	108	21 5/8	549	4	102	3065	1390.3	3121	1415.7

\*CC=Concrete Coated (square Bracelet)

IT= Internally Tapered Bracelet

TR= Reverse Tapered Bracelet

CCB= Square Bolt-On Bracelet

¥ Variable due to bolt-on assembly